

---

**WORLD LEADER IN AUTOMATED WASHING SYSTEMS SINCE 1960 | ISO-9001**

**Specifications**  
**Model: G-2000 "Genesis series"**  
**Aqueous Parts Cleaning System**  
**Mild Steel or Stainless Steel Construction**



BUREAU  
VERITAS

Bureau Veritas Certification

## BETTER ENGINEERING MANUFACTURING, INC.

1802 FASHION COURT JOPPATOWNE, MD 21085 USA

*Bureau Veritas Certification Holding SAS - UK Branch certifies that the Management System of the above organisation has been audited and found to be in accordance with the requirements of the management system standards detailed below*

### ISO 9001:2015

*Scope of certification*

DESIGN, MANUFACTURING, DISTRIBUTION AND SERVICING OF OUR WATER BASED  
PARTS CLEANING MACHINERY

Original cycle start date:	21-May-2009
Expiry date of previous cycle:	18-May-2024
Certification / Recertification Audit date:	08-March-2024
Certification / Recertification cycle start date:	19-May-2024
Subject to the continued satisfactory operation of the organisation's Management System, this certificate expires on:	18-May-2027

Certificate No.: **US019458**

Version: 1

Issue date: 20-March-2024

*Brian Sanders*



0008

**Signed on behalf of BVCH SAS UK Branch**

Certification Body Address: 5th Floor, 66 Prescott Street, London, E1 8HG, United Kingdom

Local Office: 16800 Greenspoint Park Drive Suite 300S Houston, TX 77060, USA

Further clarifications regarding the scope and validity of this certificate can be found by selecting or scanning the QR Code shown on the left.



# INTRODUCTION TO THE GENESIS SERIES

The Genesis models set the standard for automatic, water-based, parts cleaning systems. With these machines, you no longer have to use hazardous solvents or waste valuable man hours on hand cleaning.

Mechanics simply load dirty parts, start the cleaning cycle, and walk away. Using powered spray action (G-1500, G-2000, G-3000), parts are safely cleaned with a hot, detergent and water solution. In just 5-15 minutes, virtually all the grease, oil, dirt, etc. are stripped off. The solution is continuously recycle from the machine's heated reservoir.

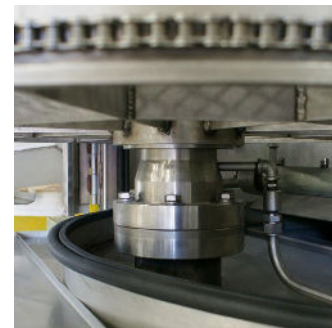
The G-1500, G-2000, and G-3000 are state-of-the-art spray washing systems. The doors rotate inward for ease of use and to save floor space. Inside the sealed cabinets, the rotating parts are blasted from all directions. These spray washers have cleaning power and features other machines do not offer.

All of these models have a **Lifetime Guarantee** on the infrastructure. This is why Better Engineering has over 25,000 systems in service throughout the world.

# STANDARD SPECIFICATIONS & FEATURES

**Lifetime Warranties:** All infrastructure elements of the machine are backed by lifetime warranties:

- All the welds are warranted not to crack, fracture, or leak\*
- The turntable and the sealed bearing support assembly are warranted against failure
- The doors and lids are warranted never to jam, sag, or twist such that proper operation and sealing is impeded
- \*Warranty void if leaks caused by corrosion\*



## Materials of Construction:

- Gauge steel - 16 and 7 gauge
- Type of steel - quoted in mild steel and/or stainless steel

**Roll-In Door:** One of the hallmark features of the Genesis series models is the roll-in door. The specifications and benefits include:

- There is no door swing, which saves floor space
- The door is center-supported (top and bottom) and virtually effortless to open and close (no drag from outside rollers)
- Positive door latch and safety limit switch
- No gasket - has a labyrinth door seal (except for a rubber strip on the top door edge)
- Removable roof panel (in the unlikely event that a large part should ever tip over and prevent the door from opening)



**The Turntable:** The Genesis series models have a powered turntable with the following features:

- Convenient load height - 29" off the ground
- Excellent accessibility for loading with approximately 50% of the turntable is in front of the doorway
- Sealed bearing assembly with a lifetime warranty
- Mounted to a structural beam that is tied directly to the ground
- The turntable spokes are 3/16" thick
- Open mesh material covers the surface of the turntable



## The Turntable Drive System:

- Positive wrap-around chain drive
- Spring loaded hinge for the gear motor/drive sprocket assembly
- Jam protection in the event of a jam, the drive chain simply slips against the turntable rim
- TEFC drive motor

## Controls:

- NEMA 12 control panel and junction boxes
- 0-30 minute wash timer

- 0-12 hour timer for tank heaters
- Adjustable thermostat for the tank heaters
- Door limit switch
- All wires numbered



- Sealed Cleaning Chamber:** The cleaning chamber is sealed-off from the holding tank by solid flooring beneath the turntable
- This sub-flooring prevents parts from falling into the holding tank and forces the solution into a removable chip basket above the tank solution level

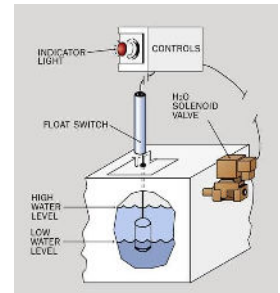
**Water Filtration System:** The recirculated solution is filtered to remove large particles and floating oils

- Removable filter basket (1/16" perforations) filters the solution after it hits the parts, but before it returns to the reservoir
- See options for oil skimmer and in-line filtration



#### **WLS-F1 Low Water Shut Down And Fill:**

- Protects the pump and heating system by shutting everything down when the water level reaches a critical low point
- An indicator light notifies the operator to correct the water level
- The float sensor is impervious to sticking or jamming. There are no pivot points or sleeves below the solution level



#### **OSK-G Weir Pan Oil Skimmer:**

- The operator simply opens side valve...the floating oils run into a built-in weir pan and out the side drain
- When the flow stops (approximately 5 minutes), the operator closes the side-drain, which activates a limit switch
- The limit switch re-activates the unit and the water level rises to the normal level
- Includes a receiver bucket with a bottom drain to remove water content



#### **Tank Features:**

- Unit is supported off the ground with 3.5" high forklift channels
- The tank floor is pitched front to back (1.5" pitch)
- Front and back tank access covers
- 2" diameter drain which is essentially flush with the lowest part of the tank floor

#### **Heating System/Holding Tank:**

- Standard heating system is electric
- Heaters are controlled with 0-12 hour timer (see options for 7 day/24 hour timer)
- See "Model Specification" for tank size and kW heat input for a given model

#### **Spray Manifolds**

- All manifolds are stainless steel
- Spray manifolds are heavy gauge piping with V-jet spray nozzles
- Manifolds positioned above, below, and on the outside of the turntable
- Mid-level, overhead spray manifold that pivots out of the way for tall parts



#### **Utility Requirements/Overall Dimensions:**

- Reference the "Model Specifications"

# MODEL SPECIFICATIONS FOR G-2000

	G-2000
<b>Cabinet Style</b>	Front loading, roll-in door
	The door rolls in to save floor space. Approximately 50% of the turntable is exposed for crane loading.
<b>Working Dimensions</b>	
Inside working height	35"
Turntable diameter	27"
Turntable area	570 sq. in
<b>Overall Dimensions</b> (approx. and without options)	42" W x 49" D x 79" H
<b>Turntable Load Capacity</b>	500 lbs.
<b>Tank</b>	
Capacity	55 gallon
Heat Source	9 kW
Approximate Heat-Up Time	1.5 hrs.
<b>Pump Motor</b>	
Type	Vertical, Seal-less
Size	3 H.P.
Output	60 GPM @ 45 PSI
<b>Construction</b> (depending on order)	Grade 304 Mild Steel or Stainless Steel; customer to specify
<b>Power Source</b>	
Standard	230V 1-Ph

	<b>G-2000</b>
Optional	230V 3-Ph or 460V 3-Ph

## CONTROLS

NEMA 12 control panel

Wash and heat timers

Adjustable thermostat

## ADDITIONAL FEATURES

**Lifetime Guarantee** against welds leaking (unless caused by corrosion)

**Lifetime Guarantee** on turntable & bearing assembly

**Lifetime Guarantee** for door (or lid) operation

**Safety Features (loading and weight support)** a) The turntable is fixed. It does not have to be pulled out for access, b) The turntable is mounted to a fixed, vertical column (not cantilevered).

**Turntable Drive System (built-in jam protection)-** Chain wraps around the turntable perimeter, friction drive

**Turntable-** The turntable rim is 1" above the spokes and the surface is covered with expanded metal

**Sealed Cleaning Chamber-** Floor between cleaning chamber and solution tank prevents parts from falling into the tank

**Slide Out Filter Basket (stainless)-** The solution gets filtered through this removable filter basket before re-entering the tank

**Sloped Tank Floor-** The tank floor is pitched 1.5" front to back

**Tank Access-** Front and rear tank access covers

**Spray Manifolds-** Top, bottom and side manifolds stainless steel nozzles. Retractable middle manifold for small parts (front loaders only)

**Low water shut off and fill**

**Weir plate oil skimmer**

## ADDITIONAL FEATURES

---

**Fork Channels-** Machine has built-in fork lift channels for structural support, tank protection and transport

---

**Paint-** Polyurethane- 1 coat primer/2 coats paint

---

**\*Consult Factory for Full Load Amp Draw\***

---

# MILD STEEL

**BETTER ENGINEERING'S GENESIS MODEL G-2000**  
**AUTOMATIC PARTS CLEANING SYSTEM**  
**MILD STEEL**

03 / 01 / 2024  
[Expiration.Date]  
800-229-3380

Payment Terms	Freight Charge	Lead Time*	Contact's Email Address
20% deposit with order, 80% before shipment	FOB, Customer is Responsible for all Freight	[LeadTime]	[Better Engineering Mfg., Inc..Email]

20% deposit with order, 80% before shipment

\*Actual delivery date will be updated at time of order based on current schedule\*

\*Freight costs are subject to change at time of shipment\*

	Price	QTY	Subtotal
<b>BASE MODEL - MILD STEEL</b>			
G-2000-MS Automatic Parts Washing System; 27" Dia Turntable; Selection of 208V, 230V, 460V and 1ph/3ph Electric, Mild Steel <b>Options included:</b> <ul style="list-style-type: none"><li>Chip Basket</li><li>Low water Shut off and Fill</li><li>Weir plate oil skimmer</li></ul>	\$14,700.00	1	\$14,700.00

**\$14,700.00**

<b>COMMON OPTIONS</b>			
Lifetime Warranties for Turntable Units <ul style="list-style-type: none"><li>All the welds are warranted not to crack, fracture, or leak*</li><li>The turntable and the sealed bearing support assembly are warranted against failure</li><li>The doors and lids are warranted never to jam, sag, or twist such that proper operation and sealing is impeded</li><li><b>Warranty void if leaks caused by corrosion</b></li></ul>	\$0.00	0	\$0.00

<b>ATC-24-G: Automatic Timer</b> Automatic 7-day/24-hour programmable timer for heaters, MS	\$300.00	0	\$0.00
<b>ASX-G-MS: Steam Exhaust</b> Steam exhaust system with three operation modes and a drip leg for condensate return (aluminum for MS & SS)	\$3,700.00	0	\$0.00
<b>ILF-100</b> Bag Filter is installed between the pump and nozzles to prevent re-deposition of suspended particles. 8-15 housing for a 5 HP pump rated for 100 GPM flow.	\$4,800.00	0	\$0.00
<b>ILS-100</b> Strainer is installed between the pump and the spray manifolds to prevent clogged nozzles. 4-12 housing for a 5 HP pump rated for 100 GPM flow.	\$2,900.00	0	\$0.00
<b>ZX-G-MS</b> Upper "ZX" level turntable for 2 tiers, MS	\$2,500.00	0	\$0.00
<b>SSB-G: Brush Pump</b> Flow through brush and pump, SS	\$400.00	0	\$0.00
<b>SPB: Small Parts Basket</b> Small parts basket with lid (12"L x 6"W x 6"H)	\$600.00	0	\$0.00
<b>MPB: Medium Parts Basket</b> Medium parts basket with lid (15"L x 9"W x 6"H).	\$900.00	0	\$0.00
<b>PRT-G2-SS: Parts Tree</b> Removable parts "Tree" to hang small parts (G-2000), SS	\$300.00	0	\$0.00
<b>CTR-G-SS: Center Rod</b> The CTR is a removable center rod that helps to stabilize tall parts, stainless steel	\$235.00	0	\$0.00
<b>CAS-G: Casters</b> Casters; For G-2000 base unit only, stainless steel	\$700.00	0	\$0.00
<b>460-G: 460V, 3 Phase</b> For G-1500 and G-2000	\$503.00	0	\$0.00
<b>UL-CSA-G: Labeling</b> Machine is UL/CSA approved and labeled	\$1,200.00	0	\$0.00

**\$0.00**

## DETERGENT

<b>PDN-50-50lb. Pail</b> A powdered detergent for heavy duty cleaning. Removes oils and most types of grease. Generally safe on all metals. Offers good rust protection and can clean at lower temperatures without foaming. 50 lbs. pail.	\$170.00	0	\$0.00
<b>HDL-125-50lb. Pail</b> The liquid equivalent of PDN-50. While the cleaning and rust inhibition may be slightly less than PDN-50, the product leaves less residual on the parts	\$140.00	0	\$0.00

		<b>\$0.00</b>
	Subtotal	<b>\$14,700.00</b>
	<b>Total</b>	<b>\$14,700.00</b>

# STAINLESS STEEL

**BETTER ENGINEERING'S GENESIS MODEL G-2000**  
**AUTOMATIC PARTS CLEANING SYSTEM**  
**STAINLESS STEEL**

03 / 01 / 2024  
[Expiration.Date]  
800-229-3380

Payment Terms	Freight Charge	Lead Time*	Contact's Email Address
20% deposit with order, 80% before shipment	FOB, Customer is Responsible for all Freight	[LeadTime]	[Better Engineering Mfg., Inc..Email]

20% deposit with order, 80% before shipment

\*Actual delivery date will be updated at time of order based on current schedule\*

\*Freight costs are subject to change at time of shipment\*

	Price	QTY	Subtotal
<b>BASE MODEL - STAINLESS STEEL</b>			
G-2000-SS Automatic Parts Washing System; 27" Dia Turntable; Selection of 208V, 230V, 460V and 1ph/3ph Electric, Stainless Steel <b>Options included:</b> <ul style="list-style-type: none"><li>Chip Basket</li><li>Low water Shut off and Fill</li><li>Weir plate oil skimmer</li></ul>	\$29,600.00	1	\$29,600.00

**\$29,600.00**

<b>COMMON OPTIONS</b>			
Lifetime Warranties for Turntable Units <ul style="list-style-type: none"><li>All the welds are warranted not to crack, fracture, or leak*</li><li>The turntable and the sealed bearing support assembly are warranted against failure</li><li>The doors and lids are warranted never to jam, sag, or twist such that proper operation and sealing is impeded</li><li><b>Warranty void if leaks caused by corrosion</b></li></ul>	\$0.00	0	\$0.00
ATC-24-G: Automatic Timer Automatic 7-day/24-hour programmable timer for heaters, MS	\$300.00	0	\$0.00

<b>ASX-G-SS: Steam Exhaust</b> Steam exhaust system with three operation modes and a drip leg for condensate return (aluminum for MS & SS)	\$3,700.00	0	\$0.00
<b>ILF-100</b> Bag Filter is installed between the pump and nozzles to prevent re-deposition of suspended particles. 8-15 housing for a 5 HP pump rated for 100 GPM flow.	\$4,800.00	0	\$0.00
<b>ILS-100</b> Strainer is installed between the pump and the spray manifolds to prevent clogged nozzles. 4-12 housing for a 5 HP pump rated for 100 GPM flow.	\$2,900.00	0	\$0.00
<b>ZX-G-SS</b> Upper "ZX" level turntable for 2 tiers, SS	\$3,300.00	0	\$0.00
<b>SSB-G: Brush Pump</b> Flow through brush and pump, SS	\$400.00	0	\$0.00
<b>SPB: Small Parts Basket</b> Small parts basket with lid (12"L x 6"W x 6"H)	\$600.00	0	\$0.00
<b>MPB: Medium Parts Basket</b> Medium parts basket with lid (15"L x 9"W x 6"H).	\$900.00	0	\$0.00
<b>PRT-G2-SS: Parts Tree</b> Removable parts "Tree" to hang small parts (G-2000), SS	\$300.00	0	\$0.00
<b>CTR-G-SS: Center Rod</b> The CTR is a removable center rod that helps to stabilize tall parts, stainless steel	\$235.00	0	\$0.00
<b>CAS-G: Casters</b> Casters; For G-2000 base unit only, stainless steel	\$700.00	0	\$0.00
<b>460-G: 460V, 3 Phase</b> For G-1500 and G-2000	\$503.00	0	\$0.00
<b>UL-CSA-G: Labeling</b> Machine is UL/CSA approved and labeled	\$1,200.00	0	\$0.00

**\$0.00**

## DETERGENT

<b>PDN-50-50lb. Pail</b> A powdered detergent for heavy duty cleaning. Removes oils and most types of grease. Generally safe on all metals. Offers good rust protection and can clean at lower temperatures without foaming. 50 lbs. pail.	\$170.00	0	\$0.00
<b>HDL-125-50lb. Pail</b> The liquid equivalent of PDN-50. While the cleaning and rust inhibition may be slightly less than PDN-50, the product leaves less residual on the parts	\$140.00	0	\$0.00

**\$0.00**

Subtotal	<b>\$29,600.00</b>
<b>Total</b>	<b>\$29,600.00</b>